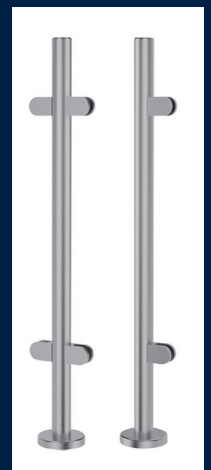
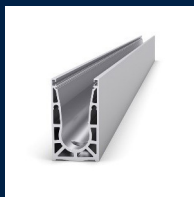




VetroMount®

- VetroMount Dry Glaze
- VetroBase Wet Glaze
- VetroPost Post Systems
- VetroRail Handrails & Caprails
- VetroClamp Spigots
- VetroPoint Standoffs



VetroMount®

The next generation in glass railing systems.

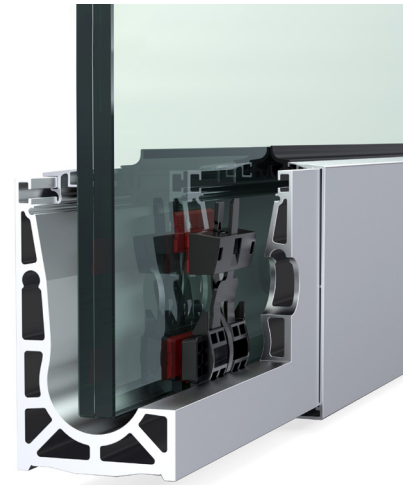
The patented VetroMount Railing System offers an efficient solution to the installation of a high-quality structural dry glazed railing. The patented system offers the installer significant savings in labor and shipping costs while providing a safe and code compliant guard rail, meeting the most stringent building code standards when properly installed.

Product highlights

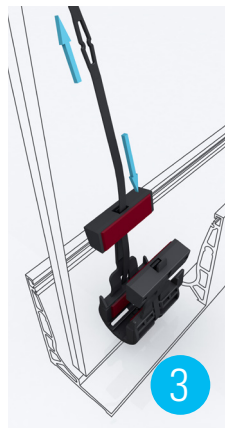
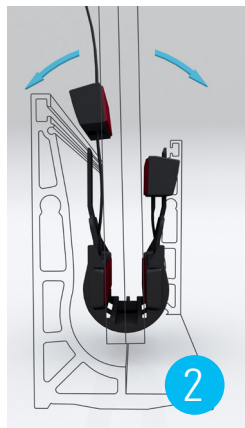
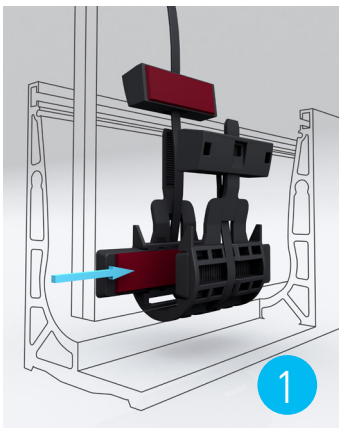
- Available in two architectural finishes: Brushed Stainless Steel and Matte Black
- Handrail brackets suitable for wall, glass, or post installations.
- All handrail brackets are supplied in kits including flat, 1.50", 1.66" and 1.90" saddles as standard.
- Handrail brackets are height adjustable and available with fixed or adjustable saddles.
- All handrail brackets are manufactured from Grade 316 Stainless Steel as standard.



VetroMount offers ICC-ES compliant solutions under ICC-ESR-4924. For more information or to view the evaluation report, visit www.icc-es.org



VetroMount® · Installation



VetroMount® Base Shoe

MOUNT	FINISH	LENGTH	ITEM
Surface	Mill	10 ft	VBS-SM120-AMI
Surface	Mill	20 ft	VBS-SM240-AMI
Fascia	Mill	10 ft	VBS-FM120-AMI
Fascia	Mill	20 ft	VBS-FM240-AMI

VetroMount® Glass Clamps

GLASS THICKNESS	COLOR	ITEM
1/2" to 9/16"	Yellow	VGC-YE012
5/8"	Green	VGC-GR058
11/16"	Red	VGC-RE111
3/4"	White	VGC-WH034
13/16"	Black	VGC-BL131

VetroBase

VetroBase · Traditional Wet Glaze



- Designed and engineered for heavy glass railings, guardrails, and windscreens
- Suitable for use with 1/2" up to 3/4" monolithic and tempered laminated glass applications

- Available in 10 ft and 20 ft lengths
- Cladding, gaskets, end caps, and accessories sold separately
- Base shoe pre-drilled 12" on center (holes start 6" in from each end)
- 6063-T5 aluminum alloy

VetroBase Base Shoe

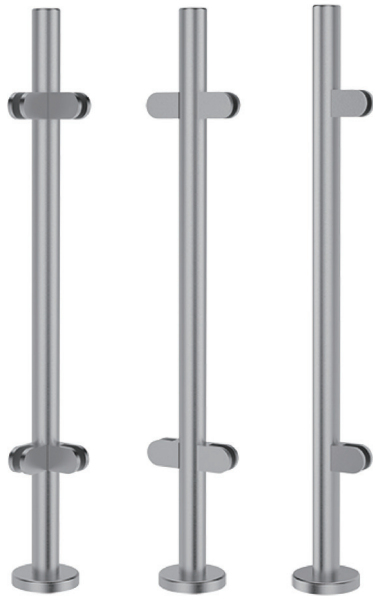
MOUNT	WIDTH	FINISH	LENGTH	ITEM
Surface	2.50"	Mill	10 ft	WBS-SM120-AMI
Surface	2.50"	Mill	20 ft	WBS-SM240-AMI
Surface	2.75"	Mill	10 ft	WBS-SM121-AMI
Surface	2.75"	Mill	20 ft	WBS-SM241-AMI

VetroBase Cladding

GLASS	FINISH	LENGTH	ITEM
1/2 - 9/16"	Brushed Stainless	10 ft	WCD-SM901-SBR
1/2 - 9/16"	Matte Black	10 ft	WCD-SM901-AMB
1/2 - 9/16"	Polished Stainless	10 ft	WCD-SM901-SPO
11/16" - 3/4"	Brushed Stainless	10 ft	WCD-SM902-SBR
11/16" - 3/4"	Matte Black	10 ft	WCD-SM902-AMB
11/16" - 3/4"	Polished Stainless	10 ft	WCD-SM902-SPO

VetroPost

VetroPost · Railing Post Kits

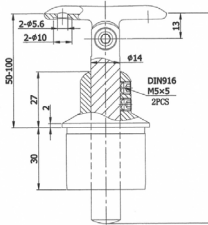


The VetroPost stainless steel railing collection offers simplicity of installation without compromising on style or quality. It's an easy-to-install, pristine product line which offers a range of high-quality, attractive design options to compliment your project.

Product highlights

- Available in two architectural finishes: Brushed Stainless and Matte Black
- Available for surface, embedded, or fascia mounted applications
- 1.90" O/D - Sch 40 Grade 316 Stainless Steel posts
- Supplied in standard 42" high kits complete with glass clamps and decorative flange cover plate (adjustable top center sold separately)
- An extensive range of complimentary accessories also available
- Fully engineered system to comply with current building codes

Post Tops



Accessories



VetroRail

VetroRail · Handrails, Caprails & Accessories



Handrail & Accessories

Available in 1.50", 1.66", and 1.90" O/D Grade 316
Brushed Stainless Steel and Matte Black



Round Caprail & Accessories

Available in 1.66" and 1.90" O/D Grade 316
Brushed Stainless Steel and Matte Black



U Shaped Caprail & Accessories

Available to suit 1/2" to 13/16" thick glass Grade 316
Brushed Stainless Steel and Matte Black



VetroRail

VetroRail · Handrail Brackets



- Available in two architectural finishes: Brushed Stainless and Matte Black
- Available for wall, glass, or post mount applications
- All handrail bracket kits include flat, 1.5", 1.66" and 1.90" O/D Saddles
- Handrail brackets are height adjustable and available with fixed or adjustable saddle brackets
- All handrail brackets are manufactured from Grade 316 Stainless Steel for durability



VetroClamp

VetroClamp · Adjustable & Non-Adjustable Spigots



- Designed for frameless glass fences, windscreens, and heavy glass railing applications
- Available in two architectural finishes: Brushed Stainless and Matte Black
- Available for wall or fascia mount applications
- Height and tilt adjustable up to 1/2" and 7°
- Manufactured from Grade 316 Stainless Steel or Duplex 2205 for durability
- No glass fabrication required



VetroPoint

VetroClamp · Adjustable & Non-Adjustable Standoffs



- Available in two architectural finishes: Brushed Stainless and Matte Black
- Adjustable and fixed options available
- 1-1/2" and 1-15/16" diameters
- 5/16" to 7/8" glass capacity (product specific)
- Manufactured from Grade 316 Stainless Steel or Duplex 2205 for durability

Adjustable and Non-Adjustable Standoffs

ADJUSTABILITY	FINISH	ITEM
Adjustable	Brushed Stainless	OAD-20030-SBR
Adjustable	Matte Black	OAD-20030-SMB
Non-Adjustable	Brushed Stainless	ONA-15010-SBR
Non-Adjustable	Matte Black	ONA-15010-SMB